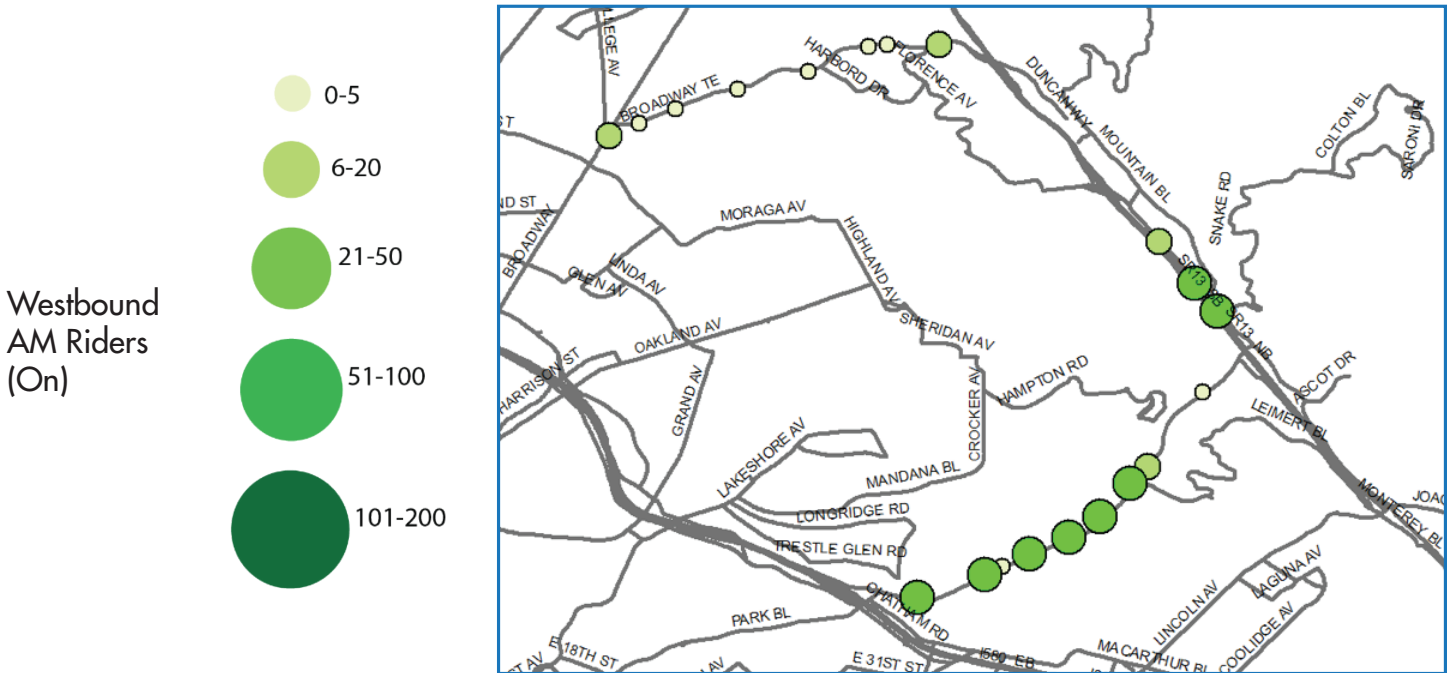


LINE V

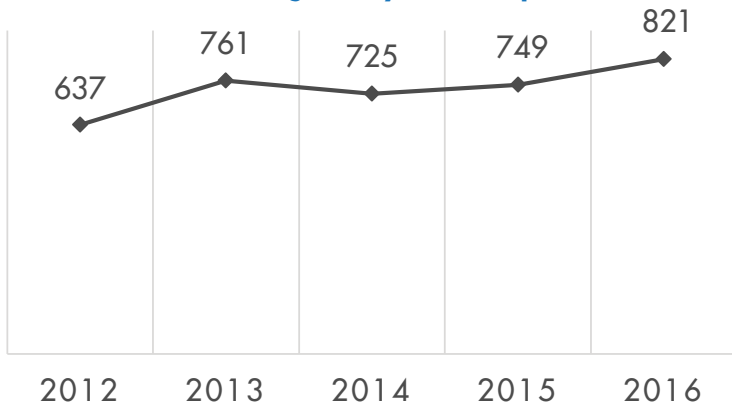
Broadway & Broadway Terrace to Transbay Terminal, SF
via Broadway Terrace / Moraga Ave. / Park Blvd. / I-580



Ridership by Stop for AM and PM Boardings



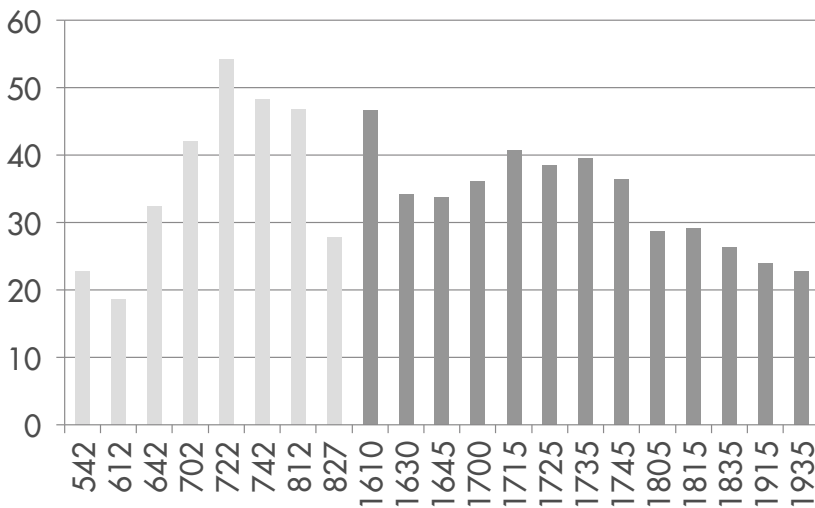
Average Daily Ridership



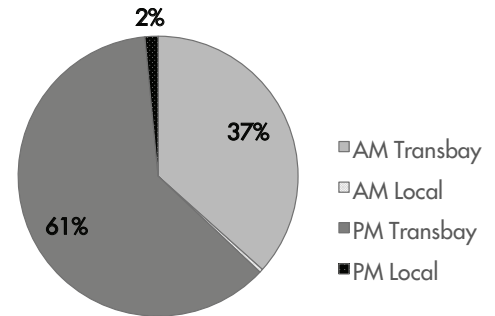
Line Statistics

Average Passengers per trip	37
Average stop spacing	1,107 feet
Population within 1/4 miles of route	15,345
Transbay Route Segment	11 miles
Local Route Segment	5 miles
Peak Frequency	10 minutes

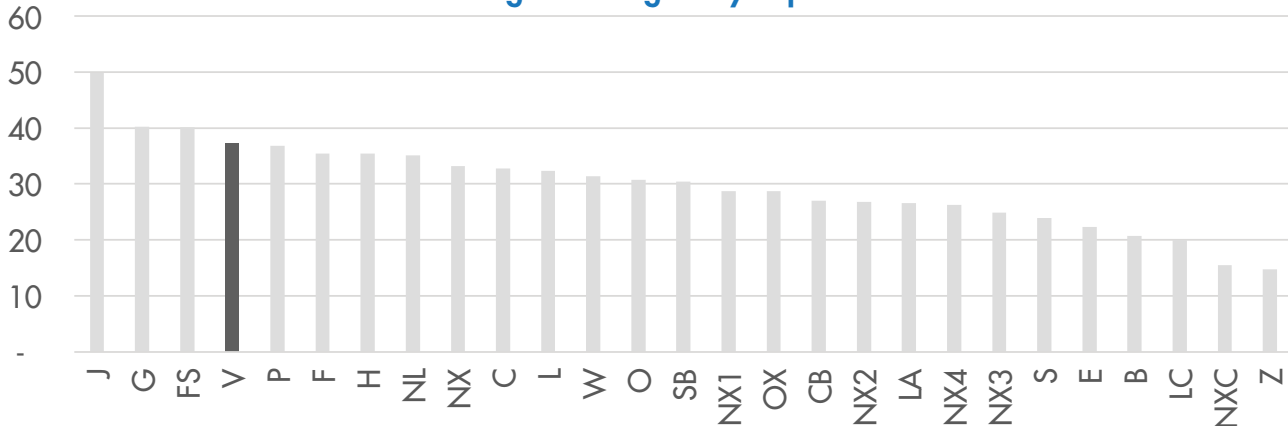
AM/PM Peak Span Trips



Ridership Comparison



Average Passengers By Trip Per Line



QUESTIONS OR COMMENTS? PLEASE SEND THEM TO PLANNING@ACTRANSIT.ORG

(510) 891-5470 / Free language assistance / Asistencia gratis en su idioma / 免費語言協助 / Libreng tulong para sa wika / Hỗ trợ giúp thông dịch miễn phí / 무료언어지원 / मुफ्त भाषा सहायता / کمک های زبان رایگان / 無料の言語支援 / مساعدة لغوية مجانية / Assistência linguagem livre / បកប្រែភាសាឥតគិតថ្លៃ / Бесплатная помощь переводчиков / បំនិរនាងព្យាបាលភាសា / மதக உதவி / Assistance linguistique gratuite