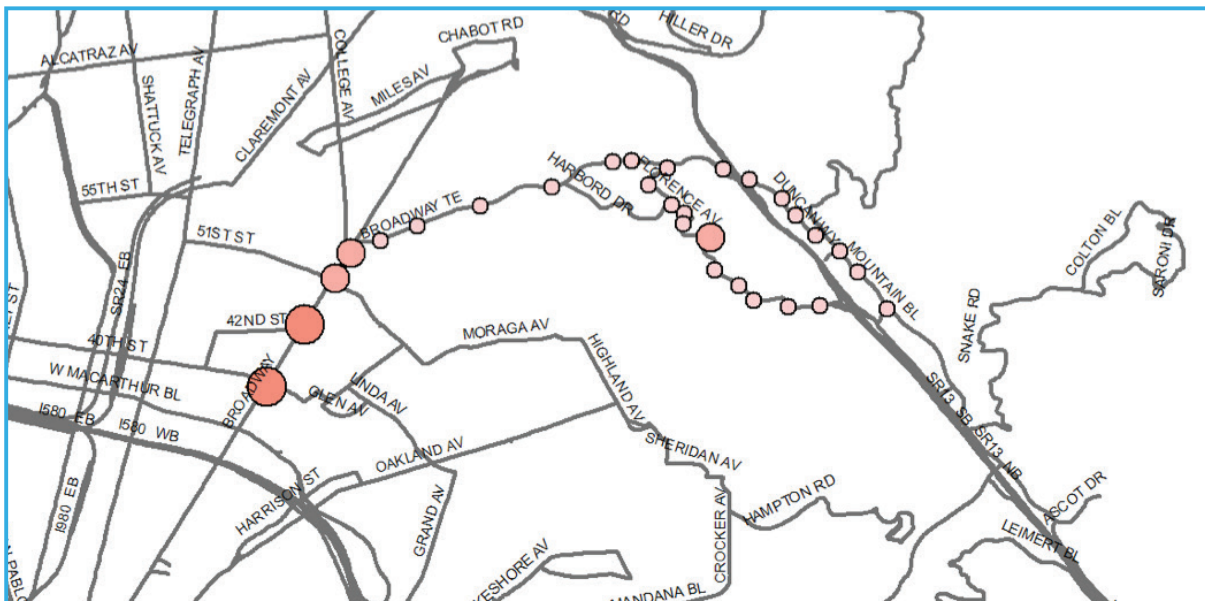
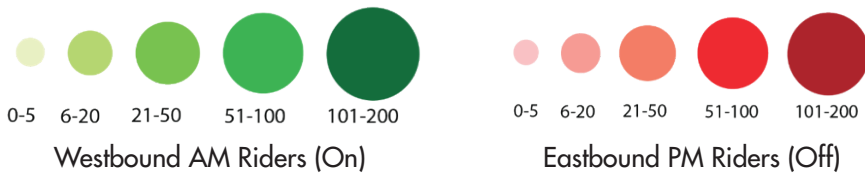
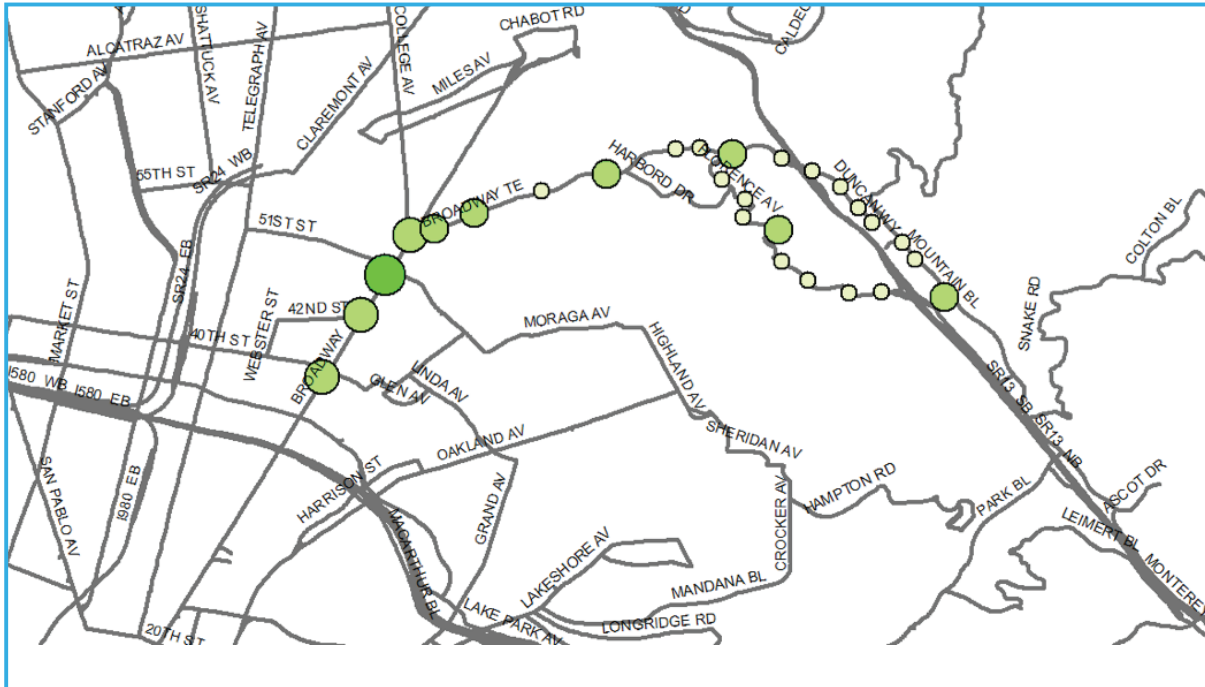


# LINE CB

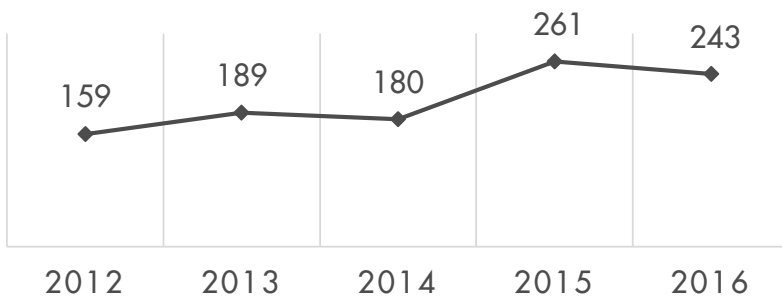
Warren Freeway and Broadway Terrace to Transbay Terminal, SF  
via Duncan Way / Harbord Ave. / Broadway Terrace  
Broadway



## Ridership by Stop for AM and PM Boardings

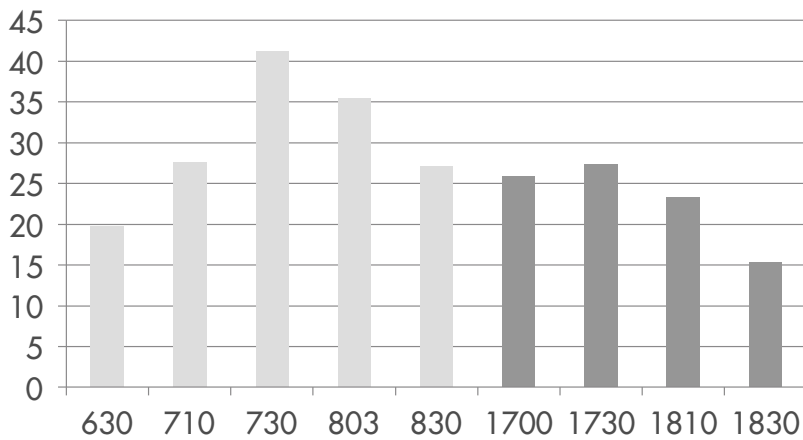


### Average Daily Ridership

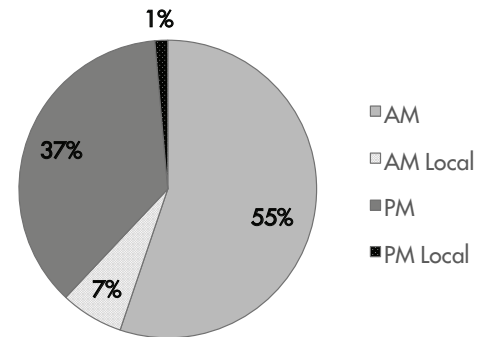


Line Statistics	
Average Passengers per trip	27 riders
Average stop spacing	818 feet
Population within 1/4 miles of route	12,535
Transbay Route Segment	10 miles
Local Route Segment	5 miles
Peak Frequency	20 minutes

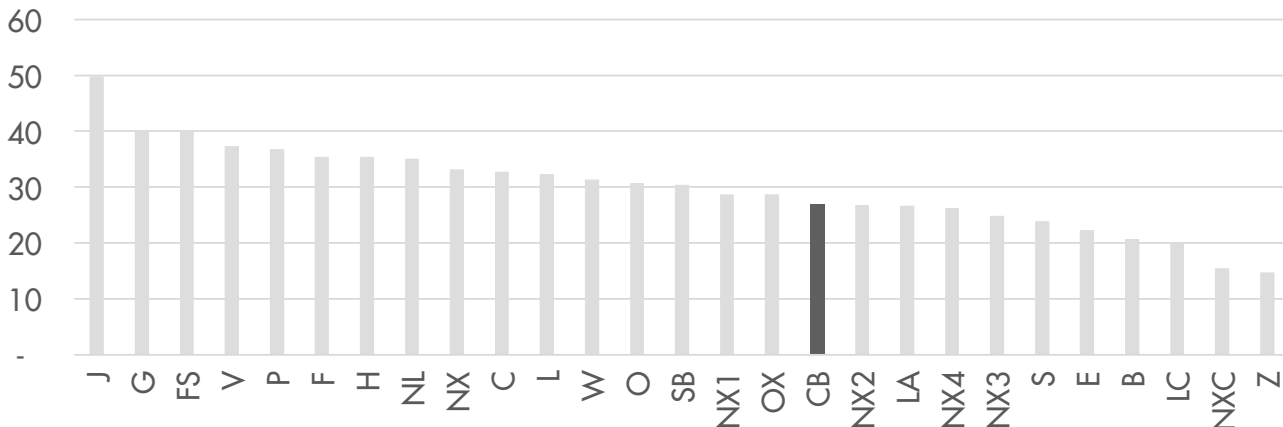
### AM/PM Peak Span Trips



### Ridership Comparison



### Average Passengers By Trip Per Line



QUESTIONS OR COMMENTS? PLEASE SEND THEM TO [PLANNING@ACTRANSIT.ORG](mailto:PLANNING@ACTRANSIT.ORG)

(510) 891-5470 / Free language assistance / Asistencia gratis en su idioma / 免費語言協助 / Libreng tulong para sa wika / Hỗ trợ giúp thông dịch miễn phí / 무료언어지원 / मुफ्त भाषा सहायता / کمک های زبان رایگان / 無料の言語支援 / مساعدة لغوية مجانية / Assistència linguagem livre / បកប្រែភាសាឥតគិតថ្លៃ / Бесплатная помощь переводчиков / បំនិពន្ធគ្រប់ភាសាឥតគិតថ្លៃ / मुफ्त भाषा सहायता / Assistance linguistique gratuite