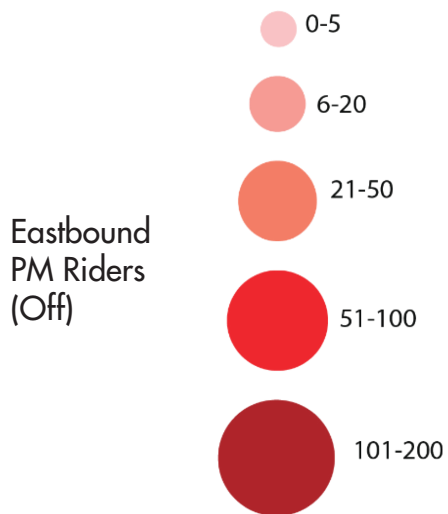
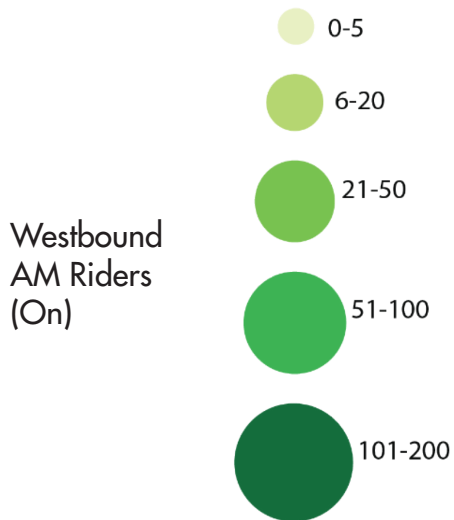


# LINE J

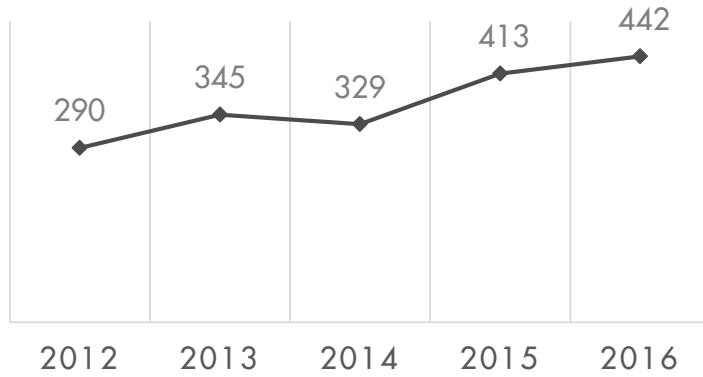
Sacramento St. & University Ave., Berkeley to Transbay Terminal, SF  
via Sacramento St. / Ashby Ave. / Christie St.



## Ridership by Stop for AM and PM Boardings



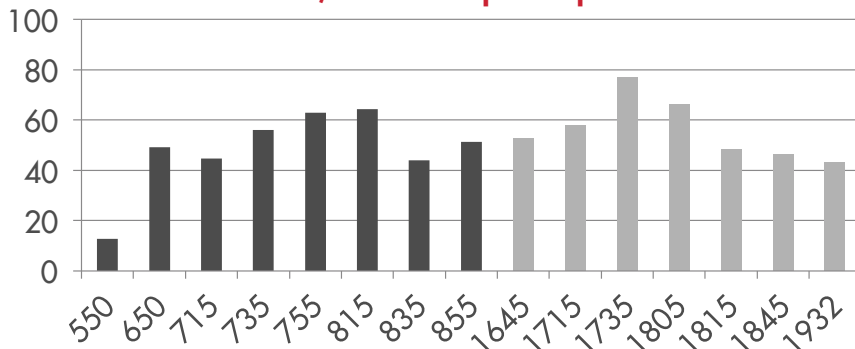
### Average Daily Ridership



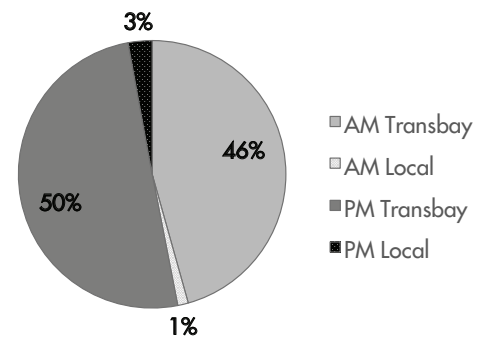
### Line Statistics

Average Passengers per trip	50 riders
Average stop spacing	1,075 feet
Population within 1/4 miles of route	19,455
Transbay Route Segment	8 miles
Local Route Segment	3 miles
Peak Frequency	20 minutes

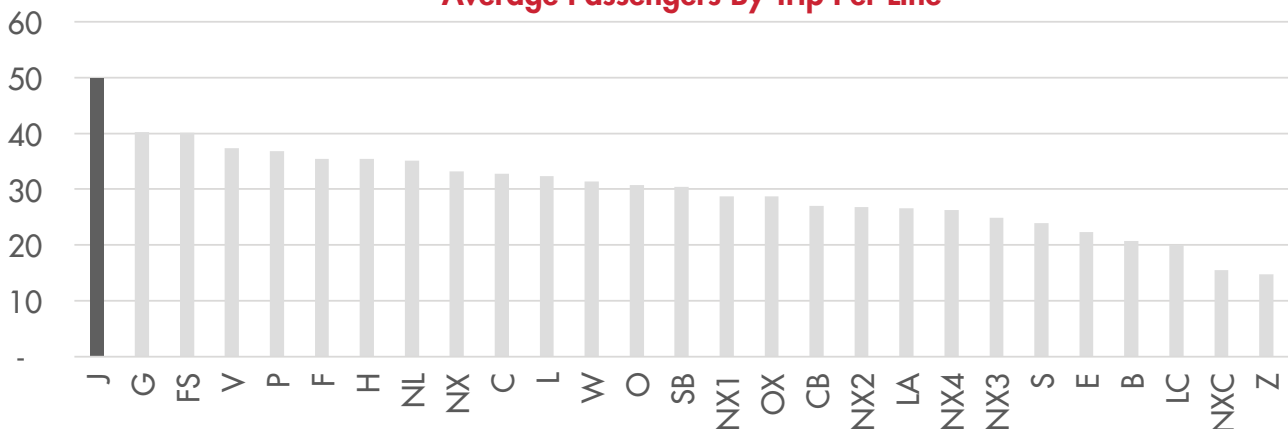
### AM/PM Peak Span Trips



### Ridership Comparison



### Average Passengers By Trip Per Line



QUESTIONS OR COMMENTS? PLEASE SEND THEM TO [PLANNING@ACTRANSIT.ORG](mailto:PLANNING@ACTRANSIT.ORG)

(510) 891-5470 / Free language assistance / Asistencia gratis en su idioma / 免費語言協助 / Libreng tulong para sa wika / Hỗ trợ giúp thông dịch miễn phí / 무료언어지원 / मुफ्त भाषा सहायता / کمک های زبان رایگان / 無料の言語支援 / مساعدة لغوية مجانية / Assistência linguagem livre / បកប្រែភាសាឥតគិតថ្លៃ / Бесплатная помощь переводчиков / បំនិរនាងព្រះបាទស្រីរាជ្យ / អនុវត្ត ភាសា សង្ហេយ / Assistance linguistique gratuite