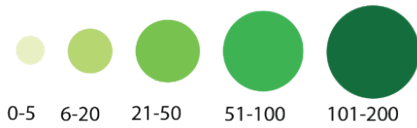
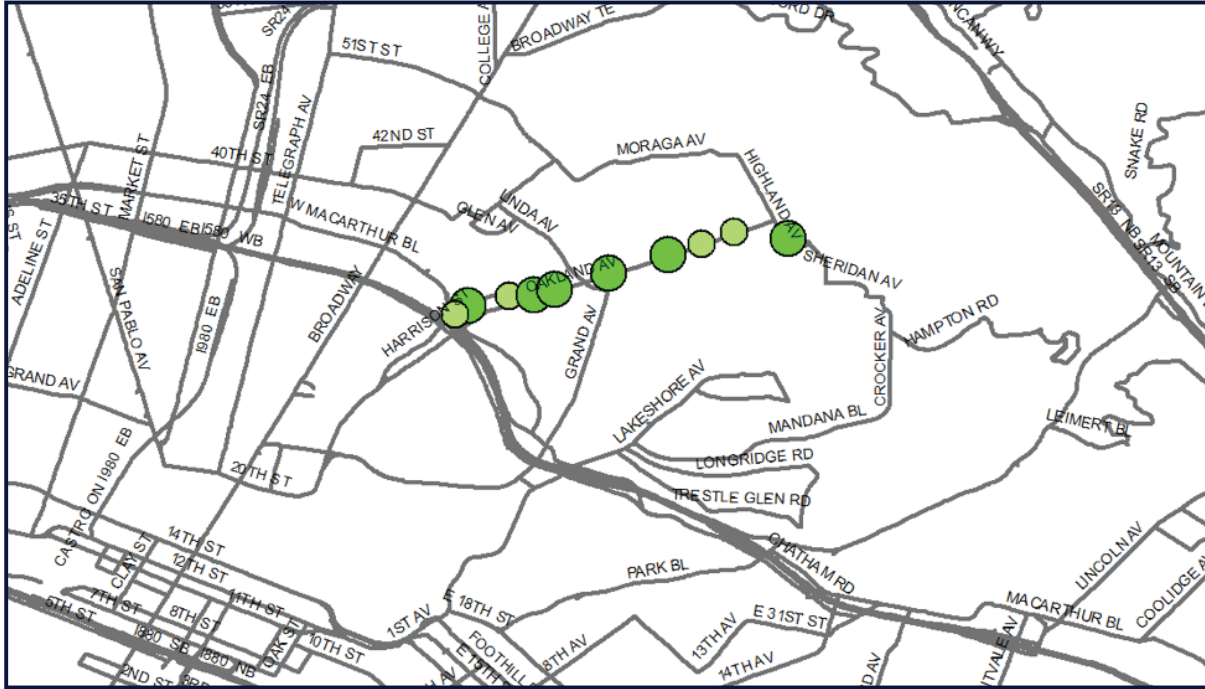


LINE P

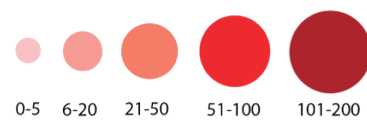
Highland Ave. & Highland Way, Piedmont to Transbay Terminal, SF
via Oakland Ave. / Harrison St. / I-580



Ridership by Stop for AM and PM Boardings



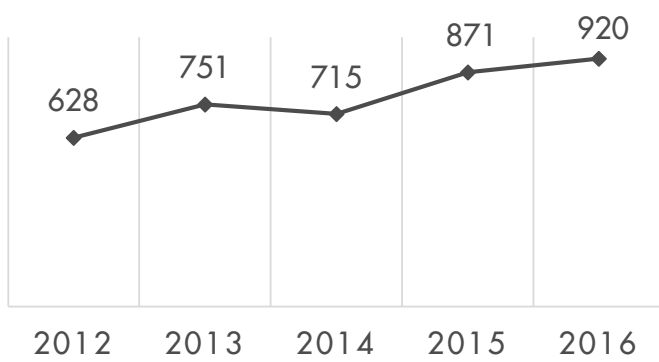
Westbound AM Riders (On)



Eastbound PM Riders (Off)



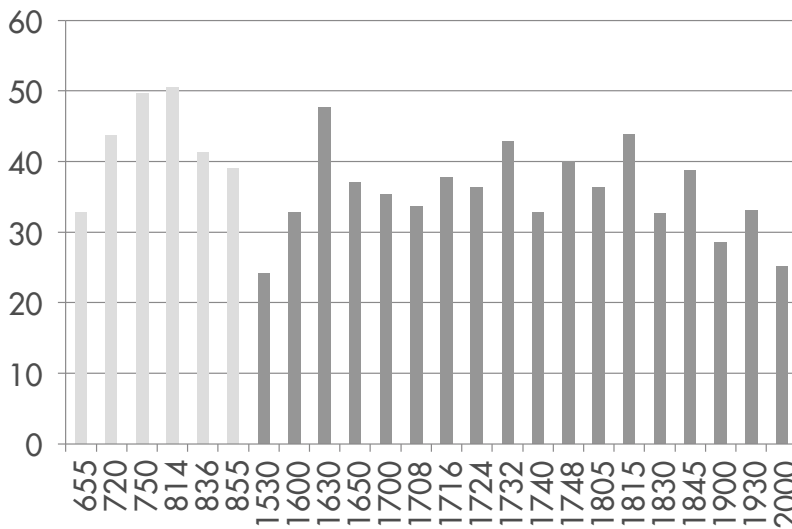
Average Daily Ridership



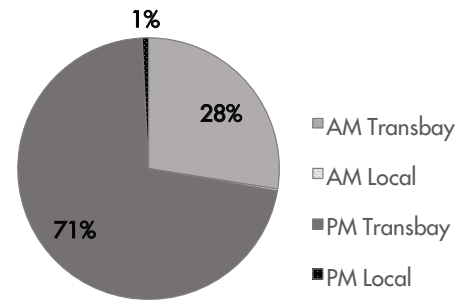
Line Statistics

Average Passengers per trip	37 riders
Average stop spacing	682 feet
Population within 1/4 miles of route	11,296
Transbay Route Segment	10 miles
Local Route Segment	2 miles
Peak Frequency	8–10 minutes

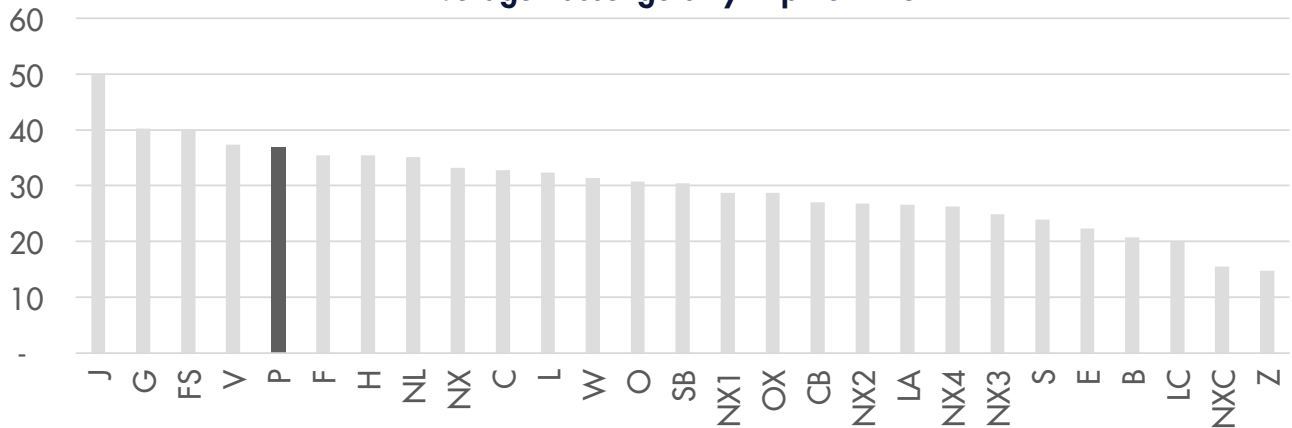
AM/PM Peak Span Trips



Ridership Comparison



Average Passengers By Trip Per Line



QUESTIONS OR COMMENTS? PLEASE SEND THEM TO PLANNING@ACTRANSIT.ORG

(510) 891-5470 / Free language assistance / Asistencia gratis en su idioma / 免費語言協助 / Libreng tulong para sa wika / Hỗ trợ giúp thông dịch miễn phí / 무료언어지원 / मुफ्त भाषा सहायता / کمک های زبان رایگان / 無料の言語支援 / مساعدة لغوية مجانية / Assistência linguagem livre / පහසුකම් සහාය / Бесплатная помощь переводчиков / បំណាច់ការបកប្រែឥតគិតថ្លៃ / 無料の言語支援 / Assistance linguistique gratuite