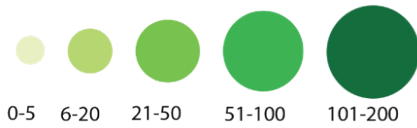


LINE ○

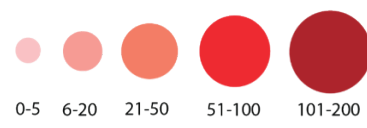
Fruitvale BART to Transbay Terminal, SF
 via Fruitvale Bridge / Ferside Blvd. / High St. / Encinal Ave.
 Broadway / Santa Clara Ave. / Webster St.



Ridership by Stop for AM and PM Boardings



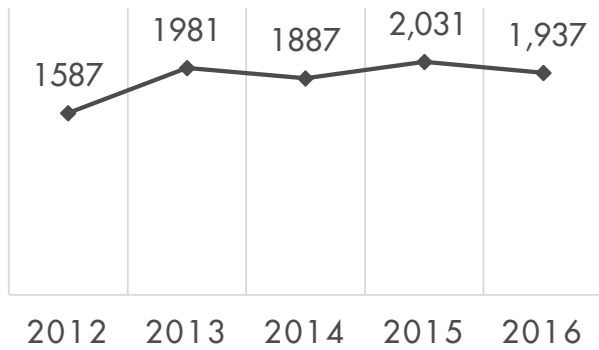
Westbound AM Riders (On)



Eastbound PM Riders (Off)



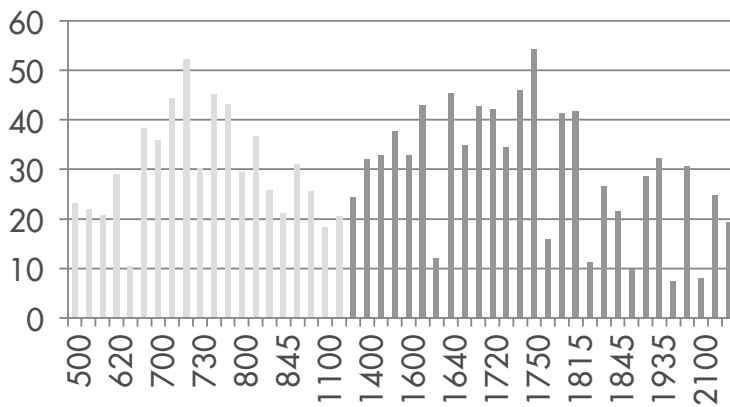
Average Daily Ridership



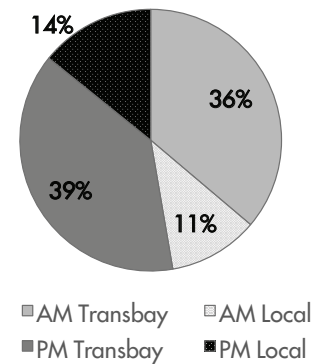
Line Statistics

Average Passengers per trip	31 riders
Average stop spacing	1,076 feet
Population within 1/4 miles of route	33,428
Transbay Route Segment	11 miles
Local Route Segment	5 miles
Peak Frequency	10 minutes

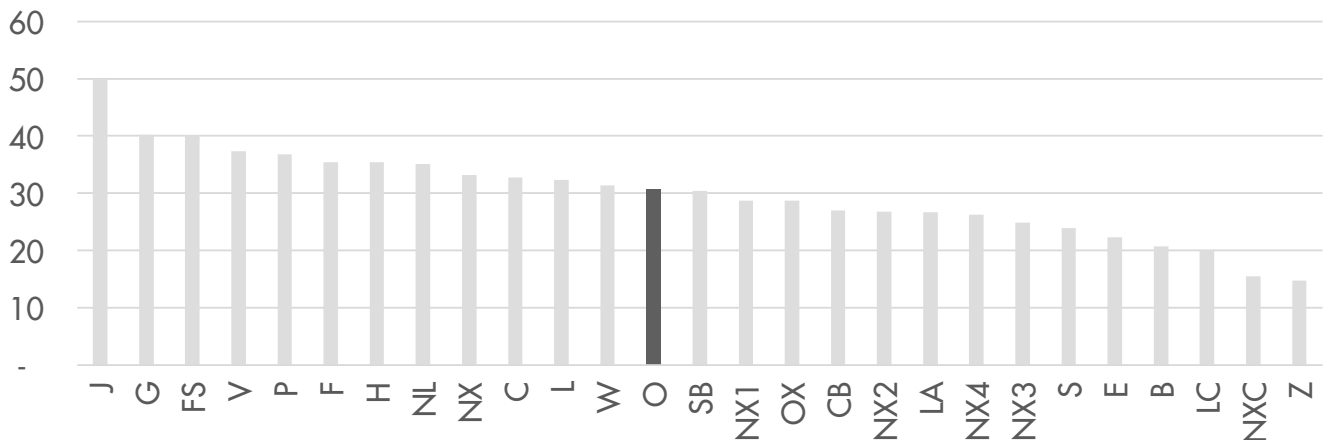
AM/PM Peak Span Trips



Ridership Comparison



Average Passengers By Trip Per Line



QUESTIONS OR COMMENTS? PLEASE SEND THEM TO PLANNING@ACTRANSIT.ORG

(510) 891-5470 / Free language assistance / Asistencia gratis en su idioma / 免費語言協助 / Librang tulong para sa wika / Hỗ trợ giúp thông dịch miễn phí / 무료언어지원 / मुफ्त भाषा सहायता / کمک های زبان رایگان / 無料の言語支援 / مساعدة لغوية مجانية / Assistência linguagem livre / បកប្រែភាសាឥតគិតថ្លៃ / Бесплатная помощь переводчиков / បំនិពន្ធគ្រប់ភាសាឥតគិតថ្លៃ / मुफ्त भाषा सहायता / Assistance linguistique gratuite