

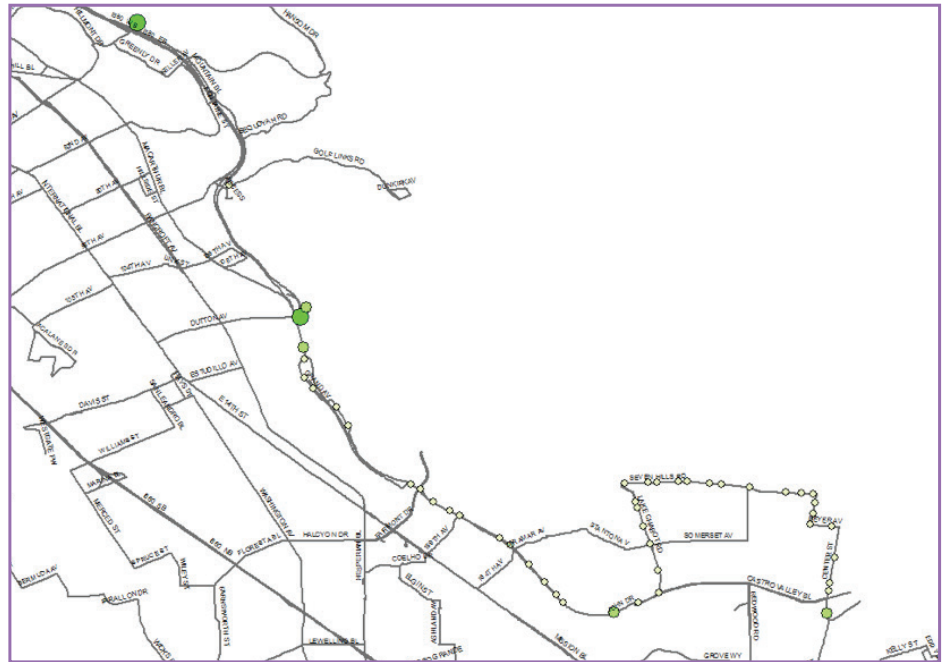
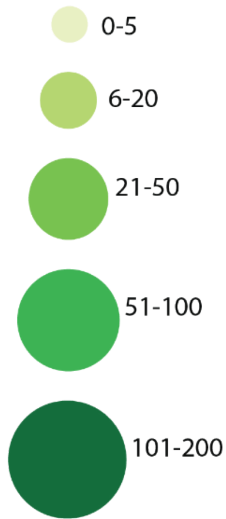
LINE NX4

Castro Valley Park & Ride to Transbay Terminal, SF
via Center Street / Seven Hills Rd. / Lake Chabot Rd. / Foothill Rd.

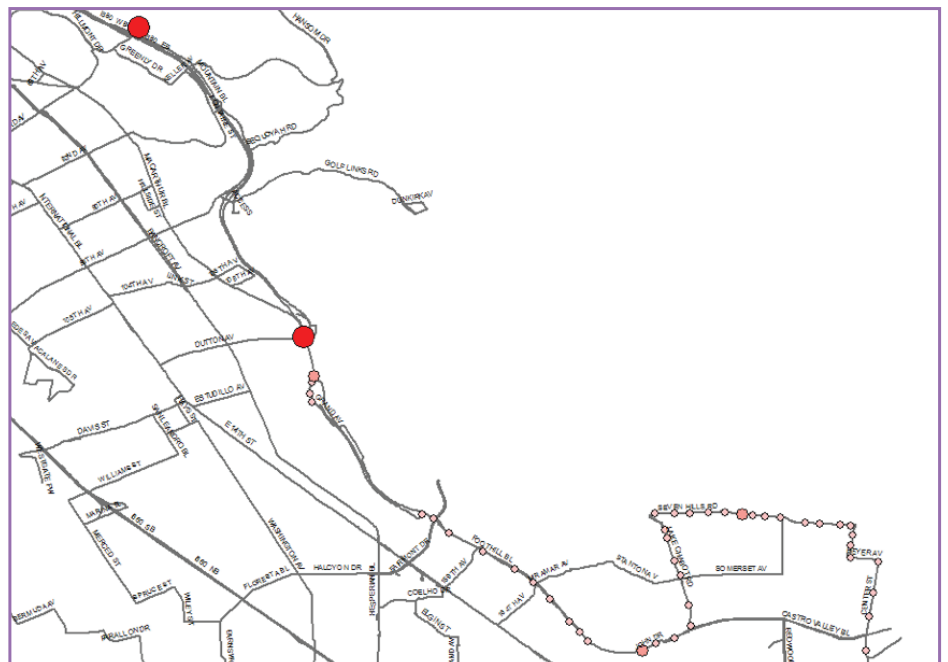
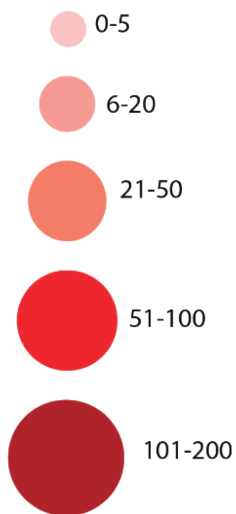


Ridership by Stop for AM and PM Boardings

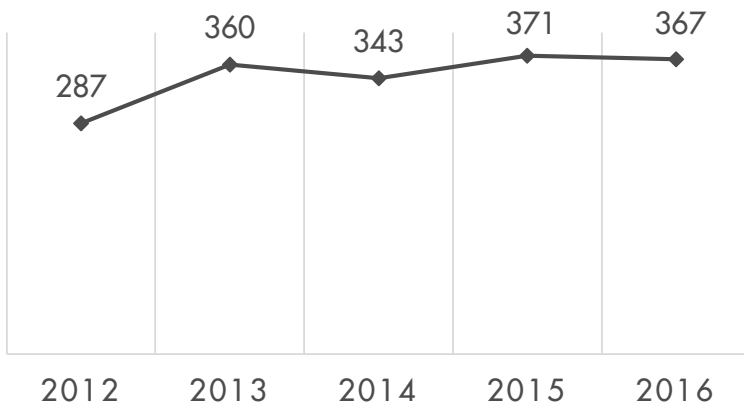
Westbound
AM Riders
(On)



Eastbound
PM Riders
(Off)



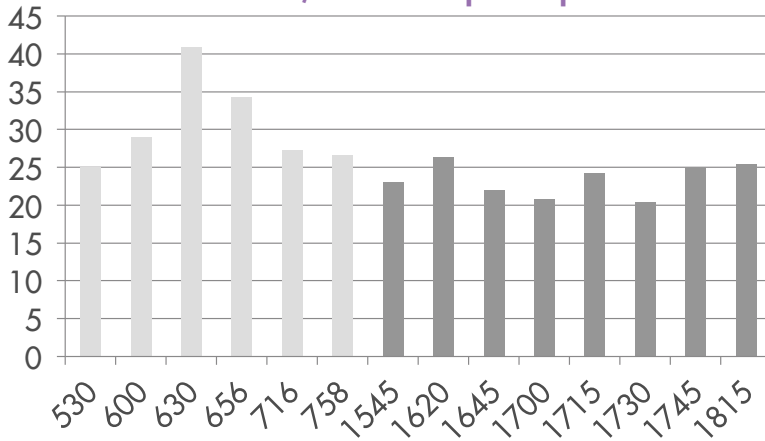
Average Daily Ridership



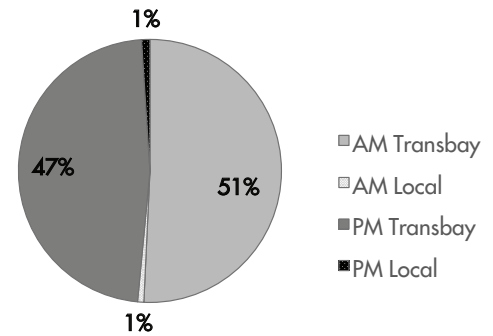
Line Statistics

Average Passengers per trip	26 riders
Average stop spacing	1,561 feet
Population within 1/4 miles of route	26,514
Transbay Route Segment	16 miles
Local Route Segment	13 miles
Peak Frequency	15 minutes

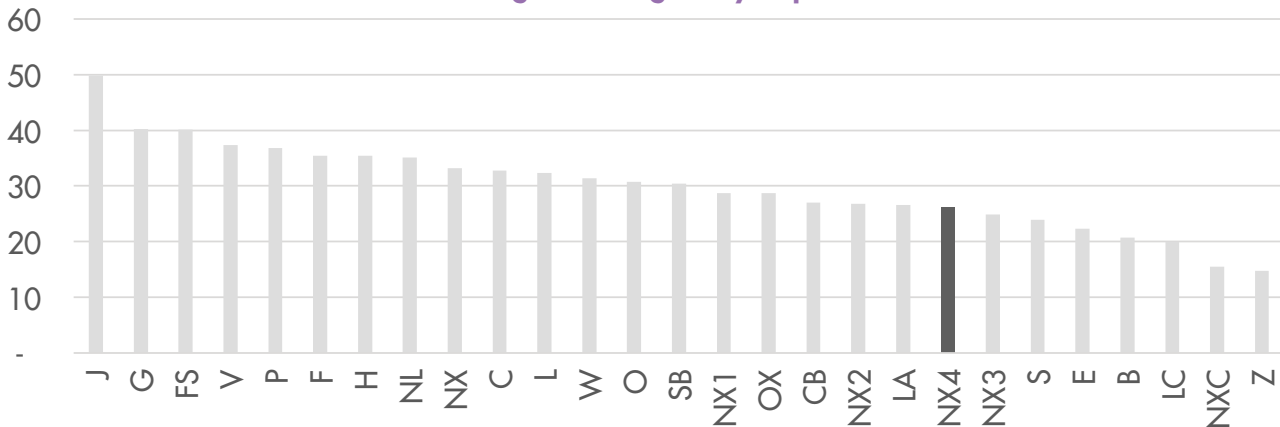
AM/PM Peak Span Trips



Ridership Comparison



Average Passengers By Trip Per Line



QUESTIONS OR COMMENTS? PLEASE SEND THEM TO PLANNING@ACTRANSIT.ORG

(510) 891-5470 / Free language assistance / Asistencia gratis en su idioma / 免費語言協助 / Libreng tulong para sa wika / Hỗ trợ giúp thông dịch miễn phí / 무료언어지원 / मुफ्त भाषा सहायता / کمک های زبان رایگان / 無料の言語支援 / مساعدة لغوية مجانية / Assistência linguagem livre / បកប្រែភាសាឥតគិតថ្លៃ / Бесплатная помощь переводчиков / បំនិពន្ធគ្រប់ភាសាឥតគិតថ្លៃ / मुफ्त भाषा सहायता / Assistance linguistique gratuite