

## Niles – Centerville FLEX

### Flex

| Peak Headway | Base Headway | Span           |
|--------------|--------------|----------------|
| <b>30</b>    | <b>30</b>    | <b>6:00 am</b> |
|              |              | <b>8:00 pm</b> |

### Activity Centers:

- Union City BART
- Centerville District
- Niles District
- Fremont Hub

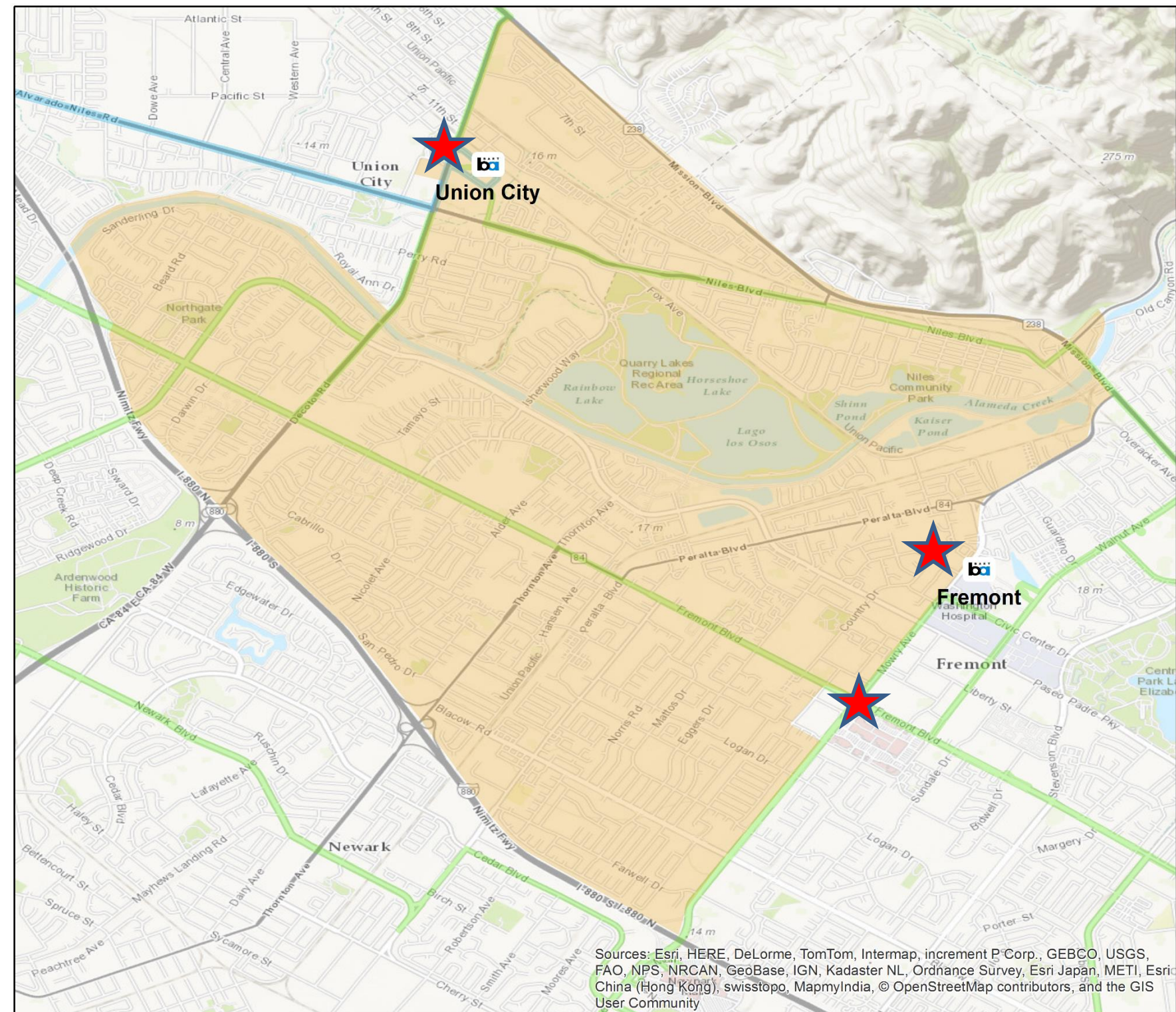
### Major Transit Hub Connections:

- Union City BART
- Fremont BART
- Fremont and Mowry

### Frequent Network Connections:

- **Mowry Avenue** (216 and 217)
- **Fremont Blvd** (210 and 239)

**Route:** Flex Shuttle will operate as demand response with no fixed route. Rides can be scheduled via phone, smart phone, or internet for any bus stop within the zone to any other bus stop within the zone. Reservations can be made in real time (no advanced notice requirements). The shuttle can also be boarded every 30 minutes at locations marked with a star for drop-offs within the zone (exact configuration to be determined).



Sources: Esri, HERE, DeLorme, TomTom, Intermap, increment P Corp., GEBCO, USGS, FAO, NPS, NRCAN, GeoBase, IGN, Kadaster NL, Ordnance Survey, Esri Japan, METI, Esri China (Hong Kong), swisstopo, MapmyIndia, © OpenStreetMap contributors, and the GIS User Community

### Bus every \_\_\_ minutes

- 5 - 8
- 10 - 12
- 15
- 20 - 30
- 40 - 60

### Accessible Destinations

- Area within 1/4 mi
- Area within 1/2 mi

0 0.25 0.5 1 Miles

