

# LINE 96

## SUMMARY

- For all day types, discontinue service in Marina Village due to low ridership:
  - Marina Village Parkway east of Mariner Square Loop
  - Challenger Drive
  - Atlantic Ave
- Existing terminal loop along Pan Am Way, W. Ranger Ave., and Saratoga St. will be discontinued.
- Alameda Point terminus (and layover location) will be moved from 650 W. Ranger Ave to nearside W. Midway Ave and Monarch St.
- Note that the circulation direction at the Alameda Landing shopping center (near the Target) will be reversed in each direction for efficiency.
- This change is intended to be cost-neutral.

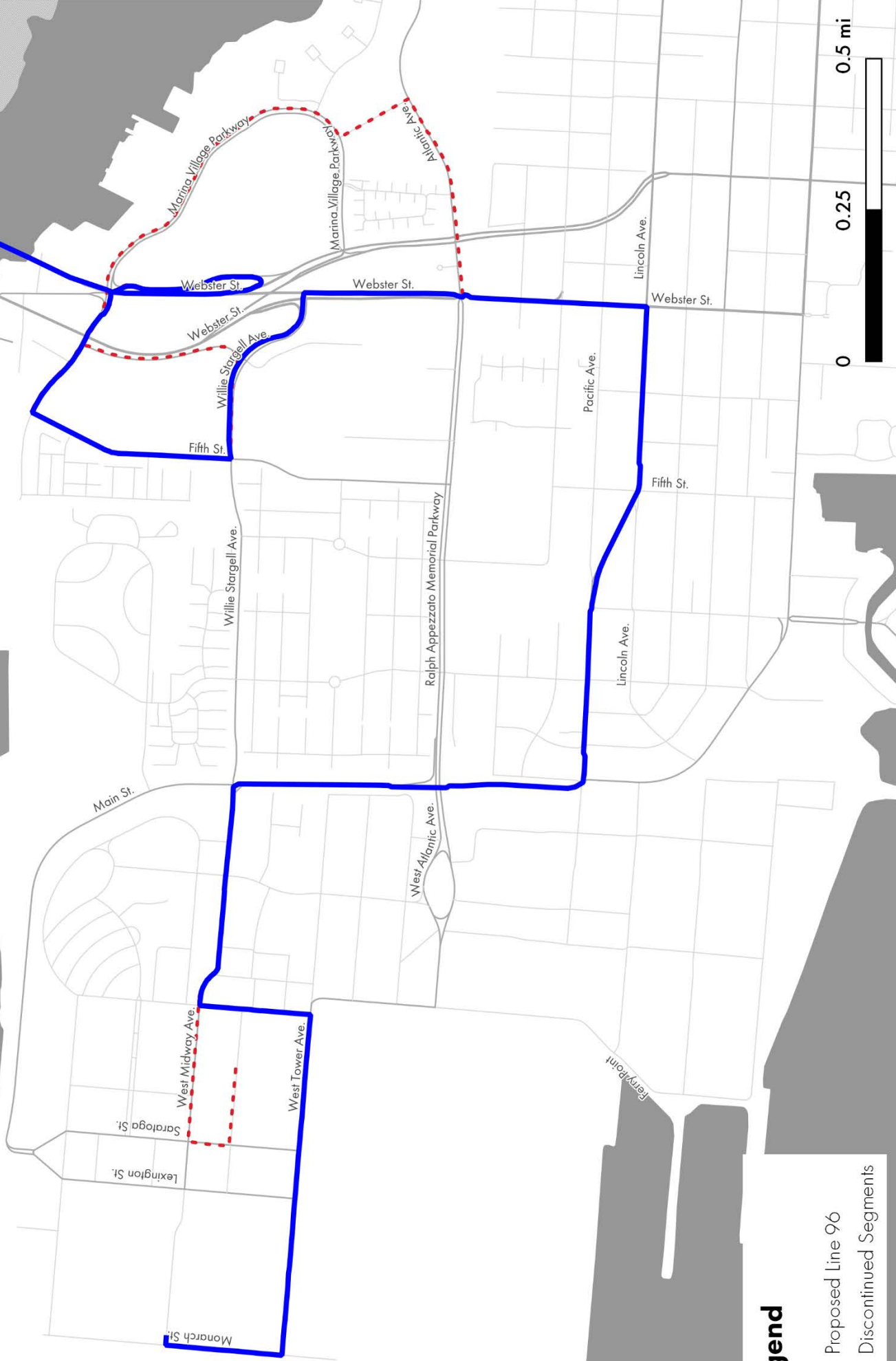
## SERVICE SPECS

	Weekday	Saturday	Sunday
First Trip	6:00 a.m.	6:00 a.m.	6:00 a.m.
Last Trip	10:00 p.m.	10:00 p.m.	10:00 p.m.
AM Frequency (7 AM – 9 AM)	30	30	30
Midday Frequency (9 AM – 4 PM)	30	30	30
PM Frequency (4 PM – 7 AM)	30	30	30
Evening Frequency (After 8 PM)	30	30	30

# Line 96 Alignment in Alameda

Eastbound to the Dimond District

Winter 2018-19 (1812WR)



## Legend

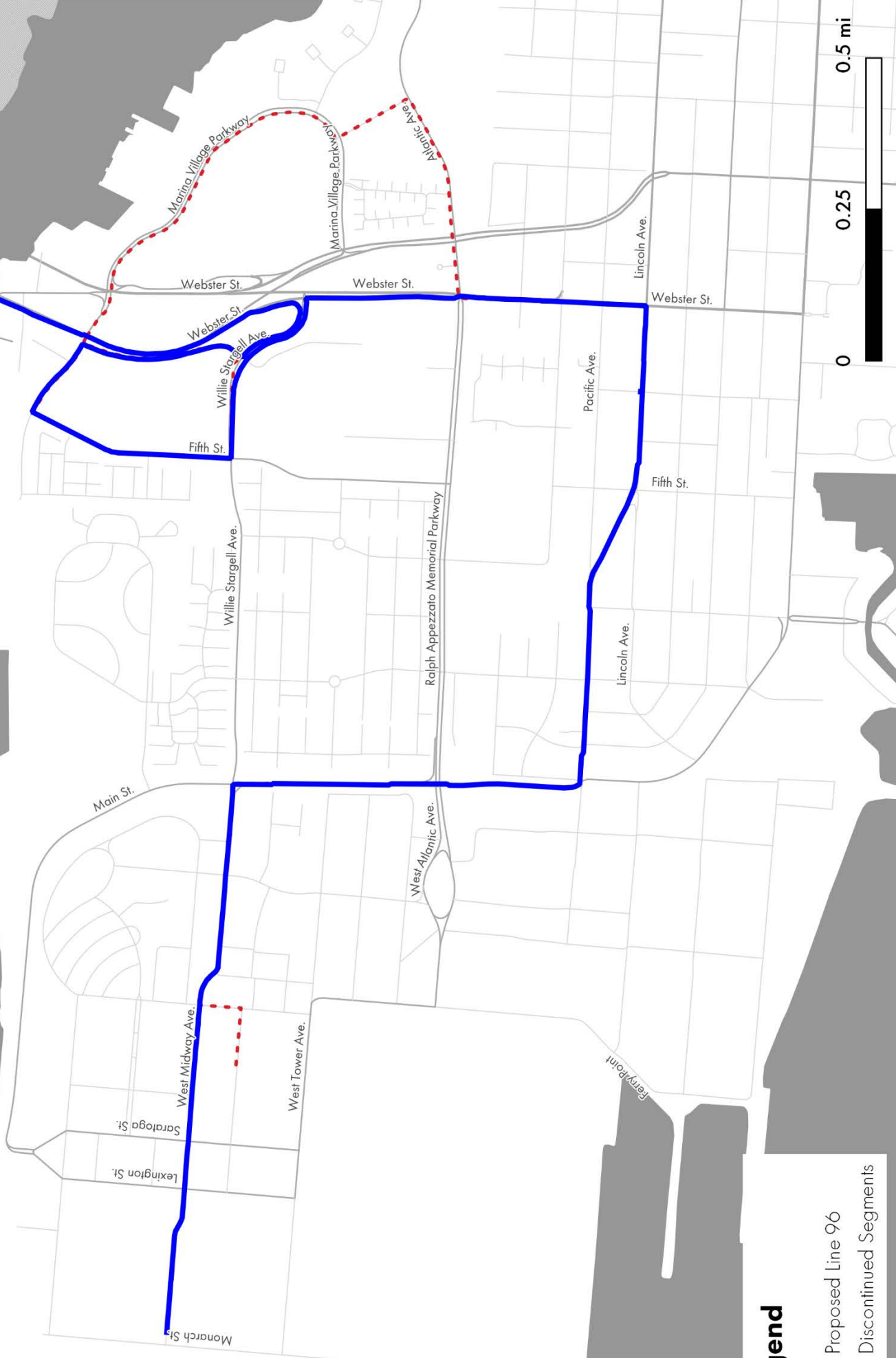
— Proposed Line 96

- - - Discontinued Segments

# Line 96 Alignment in Alameda

Westbound to Alameda Point

Winter 2018-19 (1812WR)



## Legend

— Proposed Line 96

- - - Discontinued Segments