

LINE G

Richmond St. & Potrero to Transbay Terminal, San Francisco
via Colusa Ave. / Solano Ave. / San Pablo Ave.



LINE SUMMARY		
	Existing	Proposed
Number of Bus Stops	77	45
Stop Spacing	863 Feet	1,040 Feet
Span of Service	4:40 pm – 7:17pm	4:10 pm – 7:17 pm
Local Ridership Restriction	5 Local Passengers	Served by Lines 18 and 72
Length of Route	16.28 miles	15.50 miles

Westbound Stop Removal

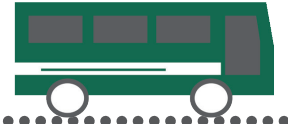
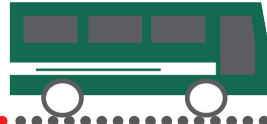
Eliminated Location		Rationale				Previous and Next Stop Location			
Street	Cross Street	Pedestrian Visibility	Stop Spacing	Ridership	Accessibility	Previous Stop Location	Next Stop Location	Previous Stop Distance	Next Stop Distance
Fairmount Ave	Victoria St		●	●		Richmond St : Fairmount Ave	Fairmount Ave : Ashbury Ave	543 ft	822 ft
Fairmount Ave	Behrens St	●	●	●		Richmond St : Fairmount Ave	Fairmount Ave : Ashbury Ave	918 ft	455 ft
Colusa Ave	Lynn Ave	●	●	●		Colusa Ave : Curry Ave	Colusa Ave : Oak View Ave	779 ft	559 ft
Colusa Ave	Visalia Ave	●	●	●		Colusa Ave : Oak View Ave	Colusa Ave : Thousand Oaks Blvd	807 ft	575 ft
Solano Ave	Tacoma Ave	●	●	●		Solano Ave : Ensenada Ave	Solano Ave : Peralta Ave	667 ft	541 ft

PM Span Increase

**Proposed First Trip
4:10 pm**

**First Trip
4:40 pm**

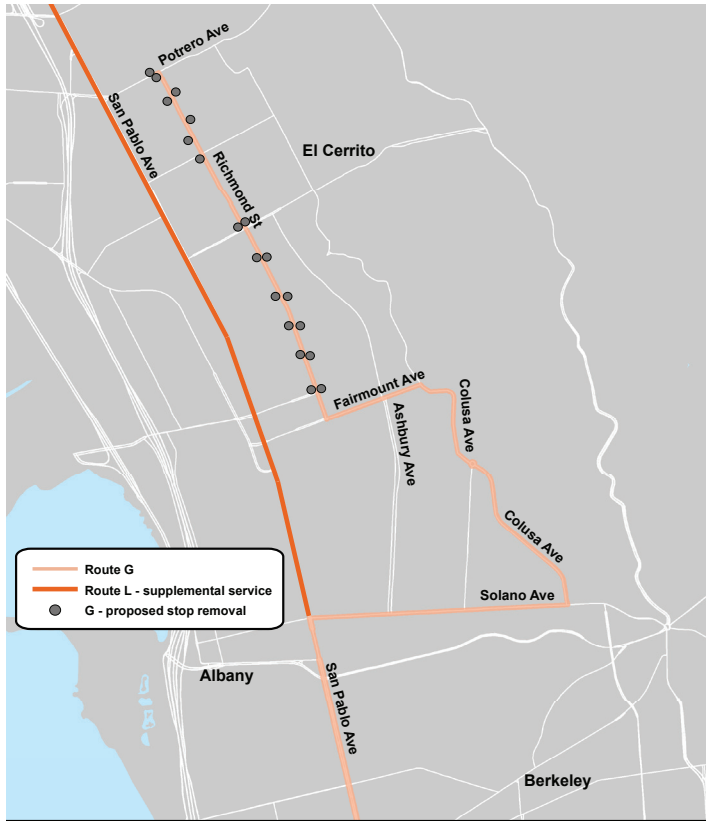
**Last Trip
7:17 pm**



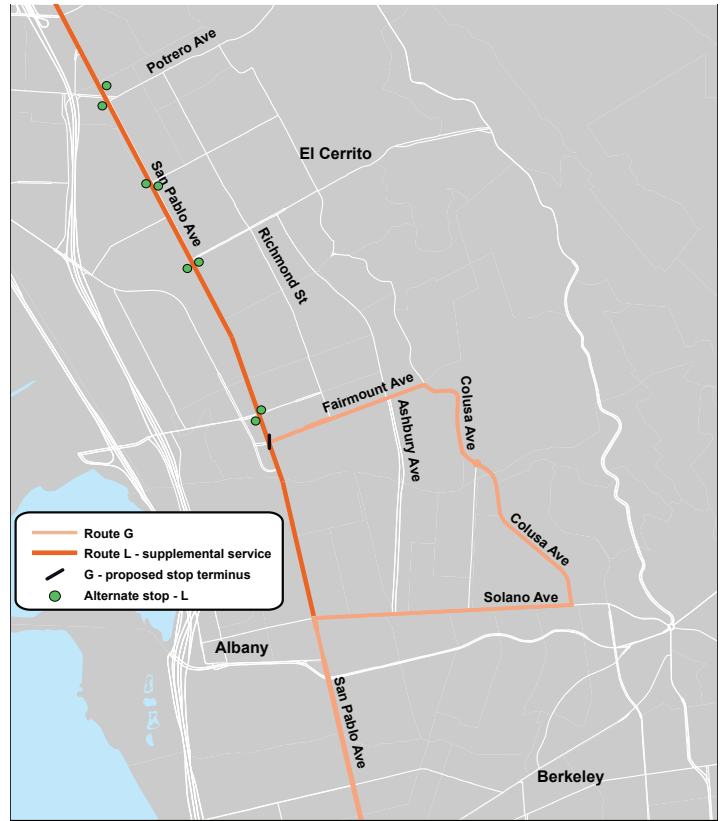
Eastbound Stop Removal

Eliminated Location		Rationale				Previous and Next Stop Location			
Street	Cross Street	Pedestrian Visibility	Stop Spacing	Ridership	Accessibility	Previous Stop Location	Next Stop Location	Previous Stop Distance	Next Stop Distance
Solano Ave	Ventura		●	●		Solano Ave : Peralta Ave	Solano Ave : Ensenada Ave	613 ft	467 ft
Colusa Ave	Visalia Ave		●	●	●	Colusa Ave : Thousand Oaks Blvd	Colusa Ave : Oak View Ave	805 ft	460 ft
Colusa Ave	Lynn Ave	●	●	●	●	Colusa Ave : Oak View Ave	Colusa Ave : Curry Ave	802 ft	701 ft
Fairmount Ave	Albemarle St		●	●		Fairmount Ave : Ashbury Ave	Fairmount Ave : Richmond St	366 ft	775 ft

Line G Current Route



Line G Proposed Terminus



Terminus at Fairmount Ave & San Pablo Ave

The maps show the proposed new terminus for Line G at Fairmount Ave & San Pablo Ave. The segment of the route on Richmond St will be removed. Riders who use stops on Richmond St will be able to use the Line L stops on San Pablo Ave to supplement Transbay service. These stops are 0.25 – 0.3 miles from the Line G stops. All passengers will continue to have Transbay service, on either Lines G or L. This route change will make trips faster and save revenue hours to help improve service elsewhere.

QUESTIONS OR COMMENTS? PLEASE SEND THEM TO PLANNING@ACTRANSIT.ORG

(510) 891-5470 / Free language assistance / Asistencia gratis en su idioma / 免費語言協助 / Librang tulong para sa wika / Hỗ trợ giúp thông dịch miễn phí / 무료언어지원 / मुफ्त भाषा सहायता / کمک های زبان رایگان / 無料の言語支援 / مساعدة لغوية مجانية / Assistència linguagem livre / បកប្រែភាសាឥតគិតថ្លៃ / Бесплатная помощь переводчиков / បំនិពន្ធគ្រប់ភាសាឥតគិតថ្លៃ / मुफ्त भाषा सहाय / Assistance linguistique gratuite